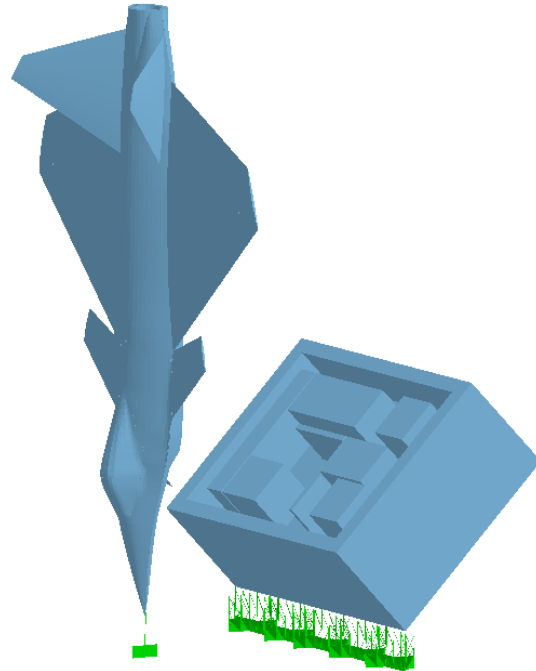
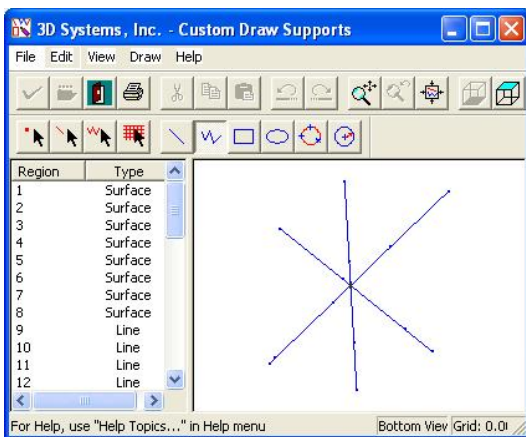


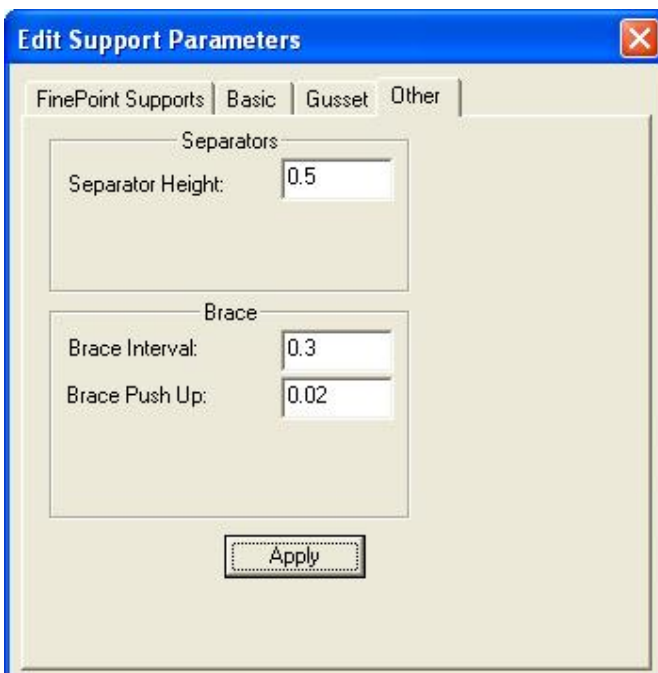
Adding Strength to Supports in 3D Lightyear™

Line or point supports generated with 3D FinePoint™ supports can be weak and result in build failures. Adjusting the *Separator Height* can be used to add additional strength.

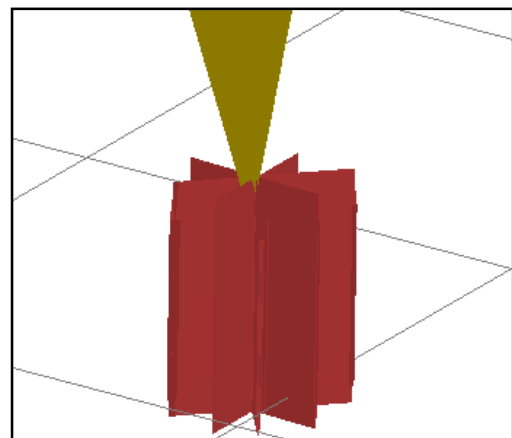
- 1) 3D Finepoint™ generated supports for single points or lines are often inefficient for some geometries as shown.
- 2) Using the **Edit Supports** and the **Custom Draw** feature, lines can be drawn intersecting the point, apply and close.



- 3) Using **Parameters** go to the **Other** tab and increase the **Separator Height**. Select **Apply** and **Save Support and Regions**.



This will extend the intersecting support into the part as a solid line. This will significantly increase the build strength by anchoring not just the point, but surfaces on the sidewall also.

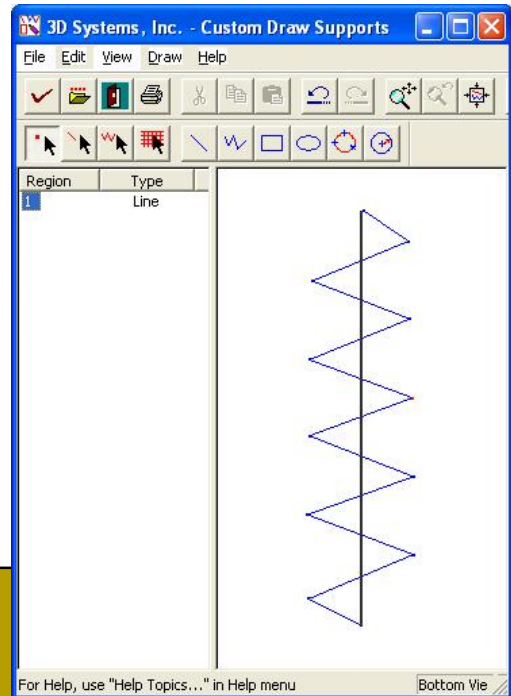
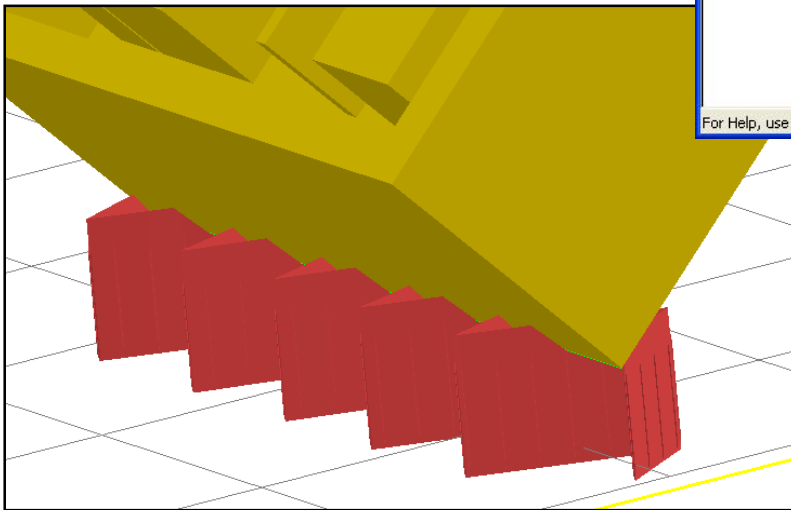


Adding Strength to Supports in 3D Lightyear™

- 4) For a line support, use the **Edit Supports** and the **Custom Draw** feature to draw “zigzag” lines across the single line. Apply and close.

Extend the **Separator Height** as shown in Step 3 above.

This will extend the zigzag support into the part as a solid line. This will significantly increase the build strength by anchoring not just the tangent line, but points along the sidewall also.



- 3D Lightyear and FinePoint are registered trademarks of the 3D Systems Corporation.